

Board of Parks & Recreation Commissioners Superintendent's Report

Christopher Williams, Chief Deputy Superintendent
February 22, 2024



Seattle
Parks & Recreation

Healthy People, Thriving Environment, Vibrant Community

#SeattleShines

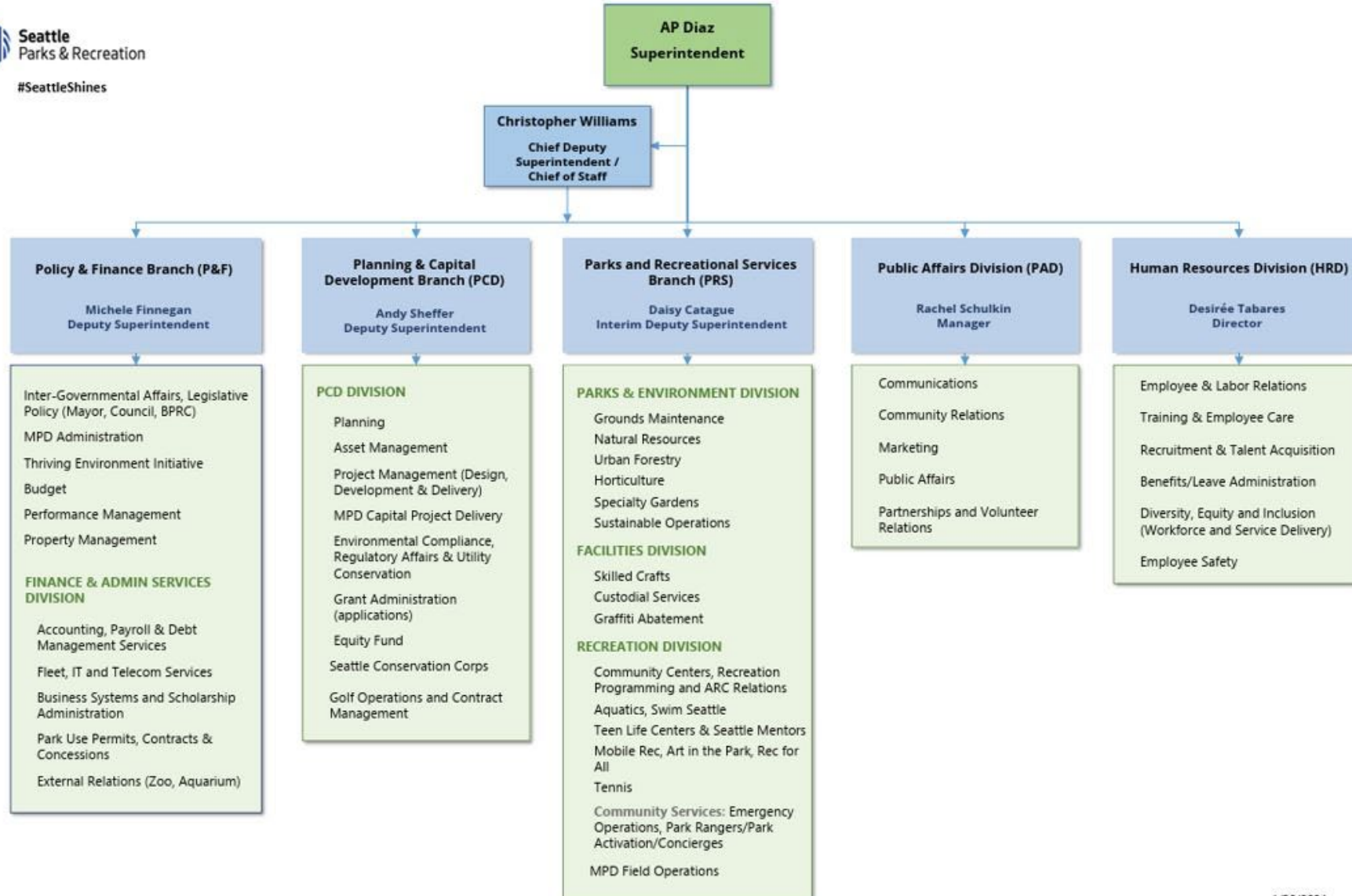


Department Update

- City Budget update and hiring freeze
- Southwest Pool shooting aftermath – follow-up
- Meeting with Councilmember Joy Hollingsworth
- Denny Blaine Park Guidelines
- Board recruitment



SPR New Organizational Structure



Parks and Environment



Cal Anderson Park graffiti removal (above) and court cleaning and maintenance at other parks (below)



Celebrating Inclusion, Volunteerism & Community

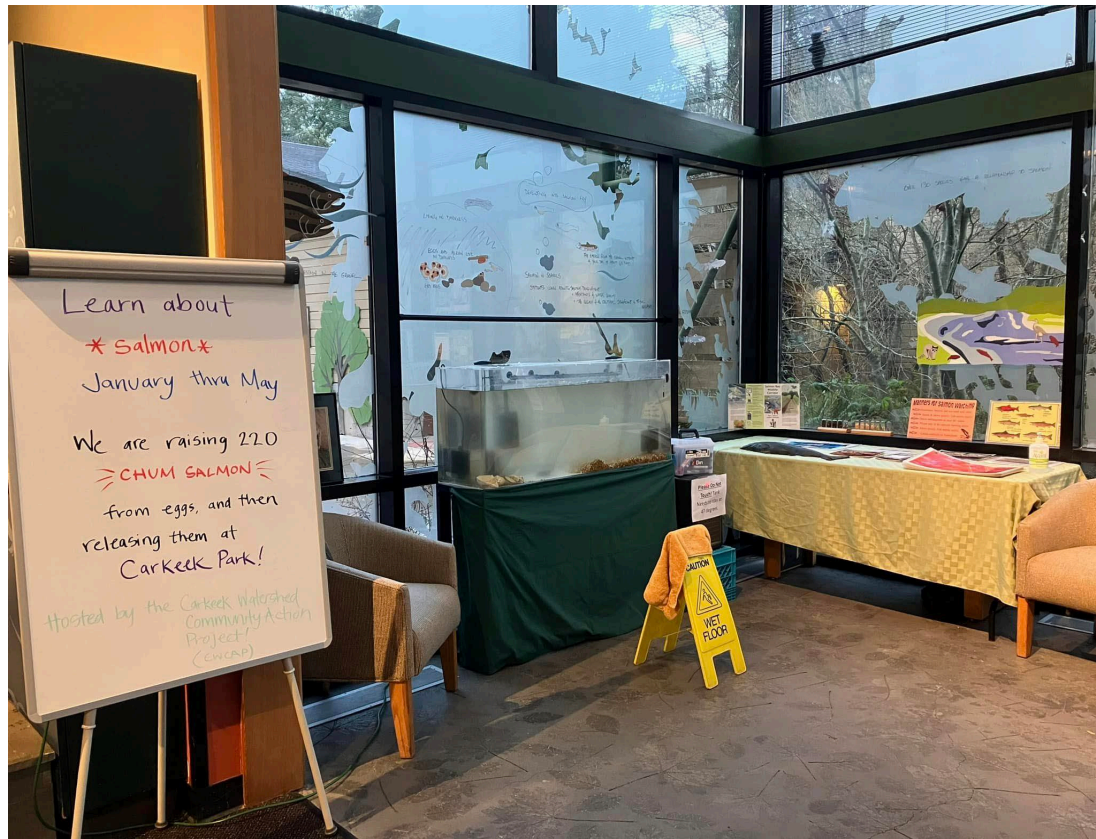


Staff and volunteers at Kubota Garden

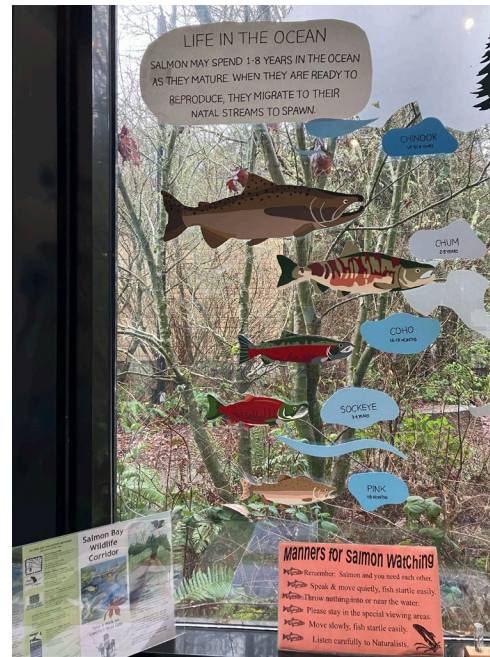


Celebrating inclusion at Magnuson Park

Parks and Recreational Services



Our salmon babies have hatched!!



Planning & Capital Development



Be'er Sheva Park opens

Concept Alternatives: Feedback

Whirl Concept



- Minimal approach
- OLA to south
- Expands existing p-patch and play area
- Land art opportunities focused near overlook
- Open lawn with picnic shelter/pavilion for events
- Smaller plazas at park entries with fitness/interpretive nodes
- Buffer along west edge

Flow Concept



- Moderate approach
- Nature play/outdoor classroom and fitness to south
- Land art opportunities extend from overlook to NE entry
- Larger plaza at NE entry
- Expands existing p-patch and adds a Food Forest
- New and larger play area near land art
- Staircase from Linden in middle of site
- Sand volleyball or smaller courts
- Buffer along west edge

Wave Concept



- Extensive approach
- Land art- extend from NE to SW corners
- Entirely new p-patch that is accessible
- New and larger play areas
- Larger plaza at NE corner
- Grand staircase from Linden in middle of site from 141st St
- Elevated boardwalk through new tree canopy in SE corner to entry of park
- Multipurpose sport courts near Linden
- Maintenance access drive from SW corner

Bitter Lake Reservoir park design

Camp Long Gate Dedication



Upcoming Events

- Feb. 23: Free teen swim nights start at Evans Pool
- Feb 25: Black Forest in Seattle at Powell Barnett Park
- Feb. 25+ Pier 62 Fire Pit
- Feb/March: Forest/park restoration events! www.greenseattle.org
- March 1: Japanese Garden re-opens



Thank you!



Seattle
Parks & Recreation

Healthy People, Thriving Environment, Vibrant Community

Off-Leash Area Expansion Study Recommendations

Board of Parks and Recreation Commissioners

Presenters:

Colin Campbell, Planning & Development Specialist II

David Bader, Senior Landscape Architect

Danyal Lotfi, Community Engagement Advisor

February 22, 2024



Seattle
Parks & Recreation

Healthy People, Thriving Environment, Vibrant Community



#SeattleShines

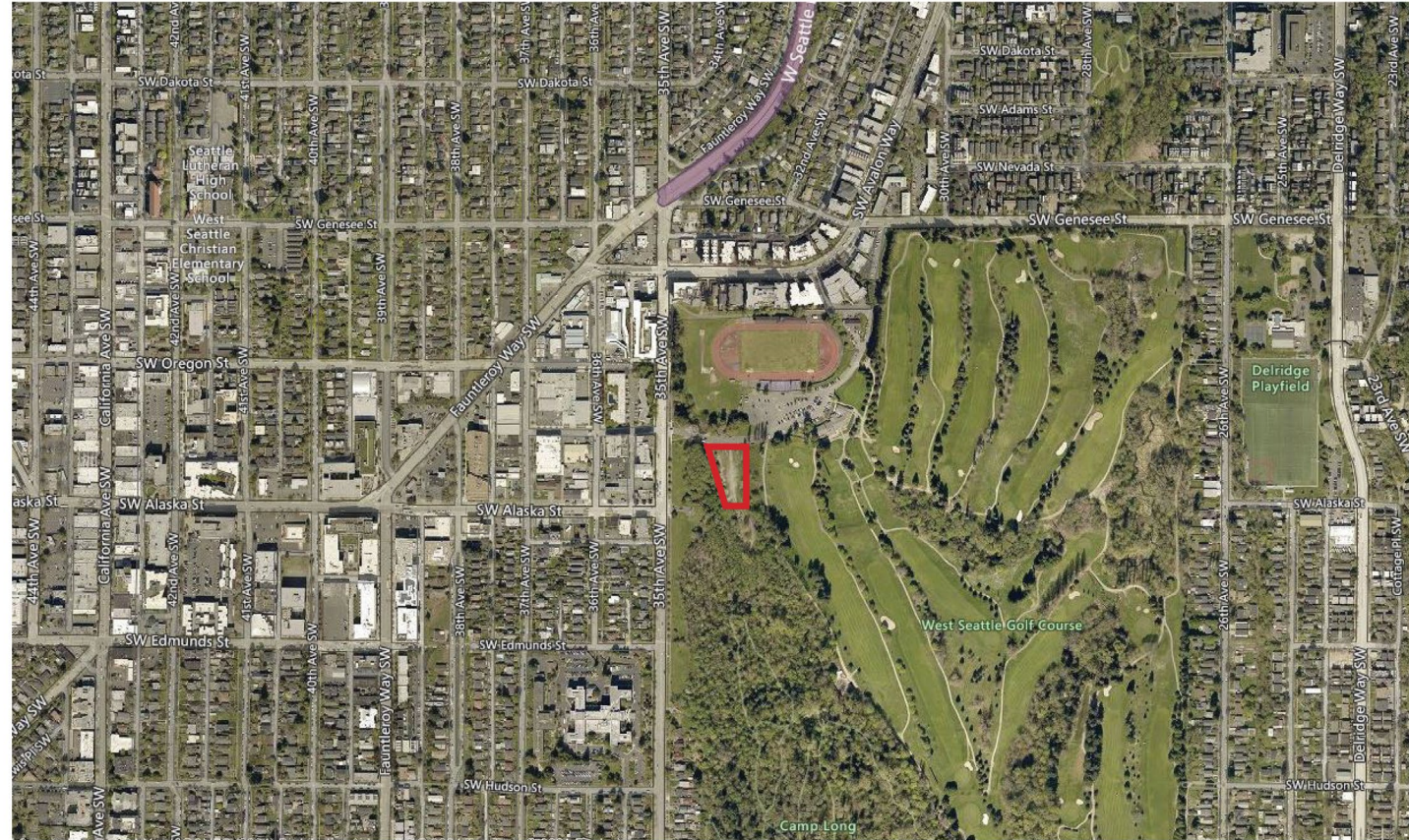
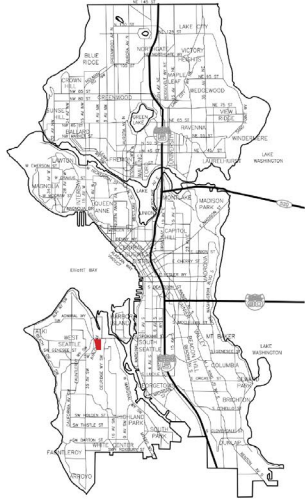


How We Got Here

- Began with 32 possible sites that were taken through site selection criteria and SPR internal ProView review
- 9 sites were determined to meet SPR basic OLA criteria
- June 2023, present to BPRC, launch public information and survey campaign
- July & August attend 3 farmers markets throughout the city to engage with park users and push survey.
- September thru November, synthesize 4753 survey responses and prepared recommendations for first 3 new OLA sites

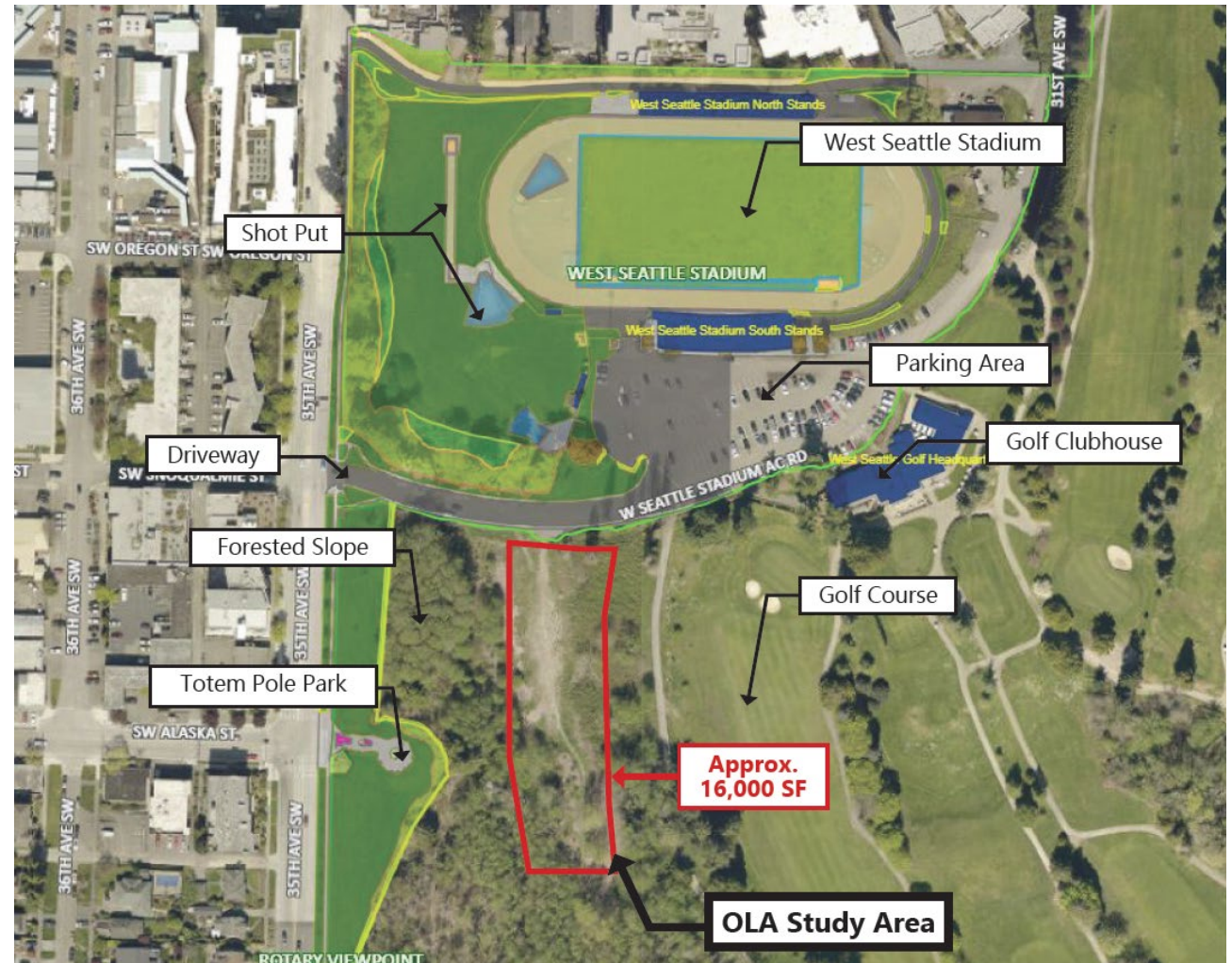


Recommendation #1: West Seattle Stadium



Recommendation #1: West Seattle Stadium

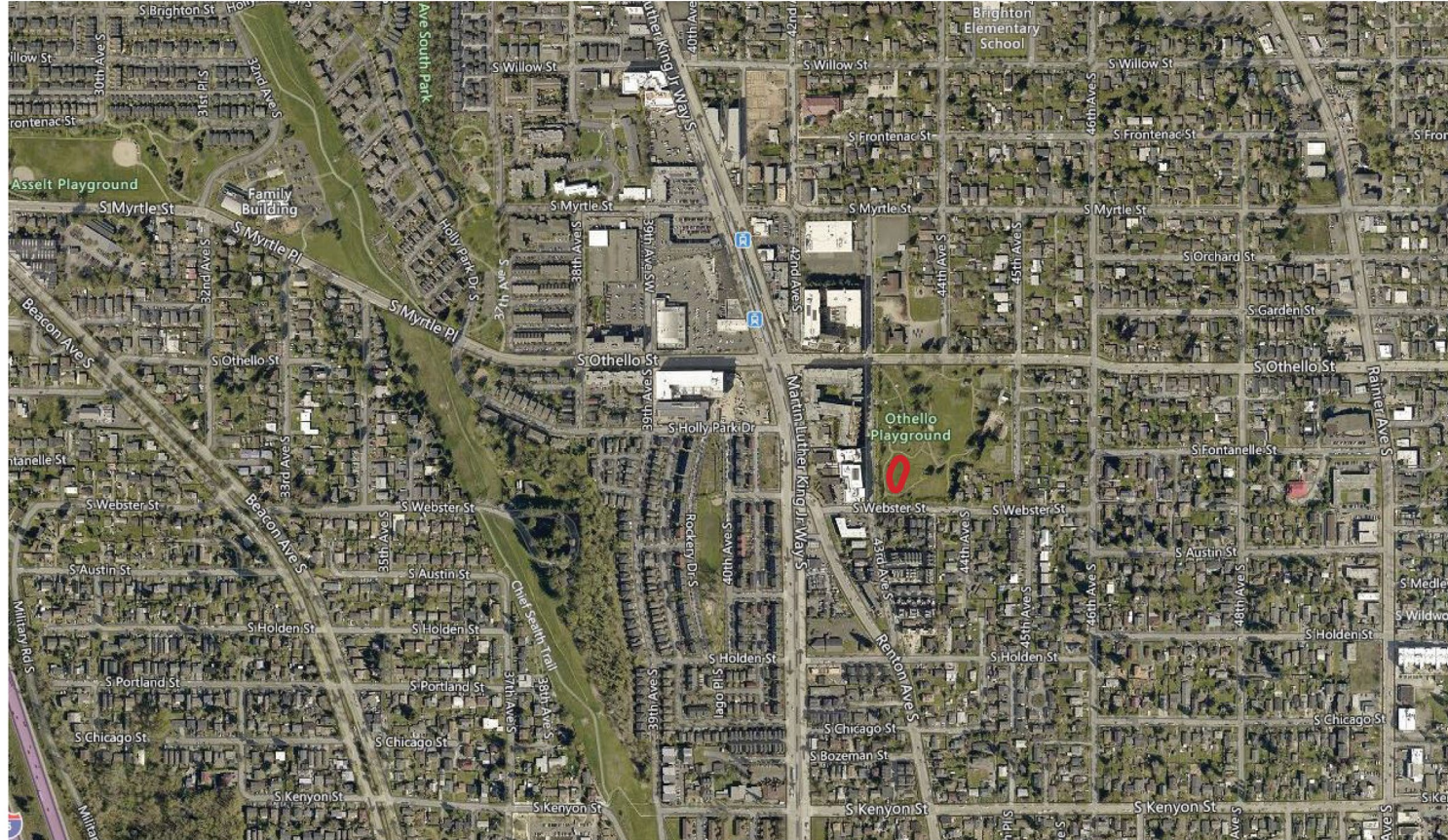
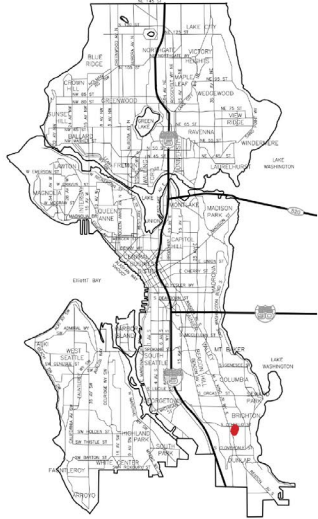
- 1976 people responded to the site
- **1720 (87%)** in support
- 256 (13%) in opposition
- Top supporting comments: density of surrounding area, walkability/transit access, current use as parking
- Top opposing comments: concerns with parking at the site, safety of driveway and entrance from 35th Ave SW



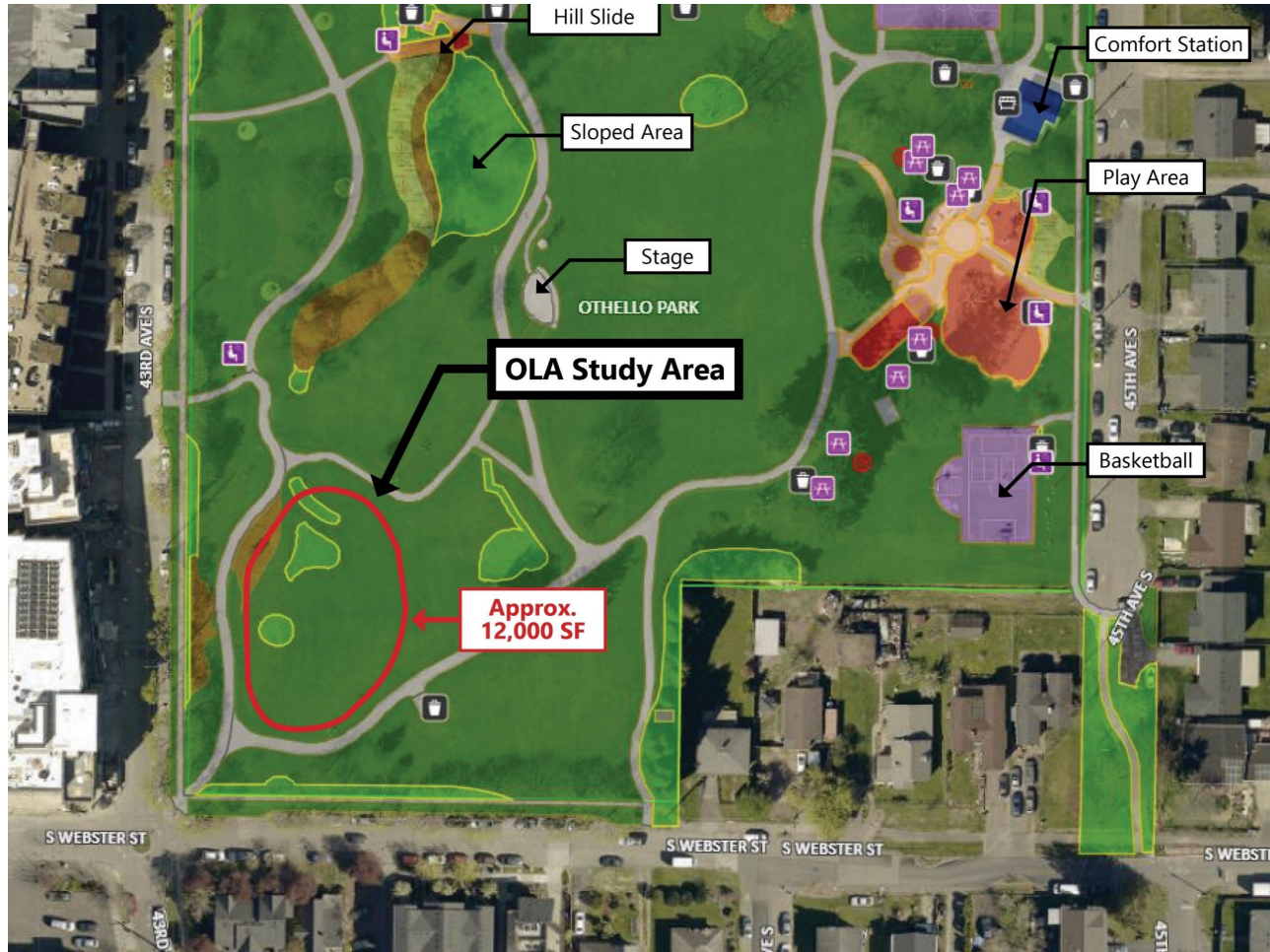
#SeattleShines



Recommendation #2: Othello Park

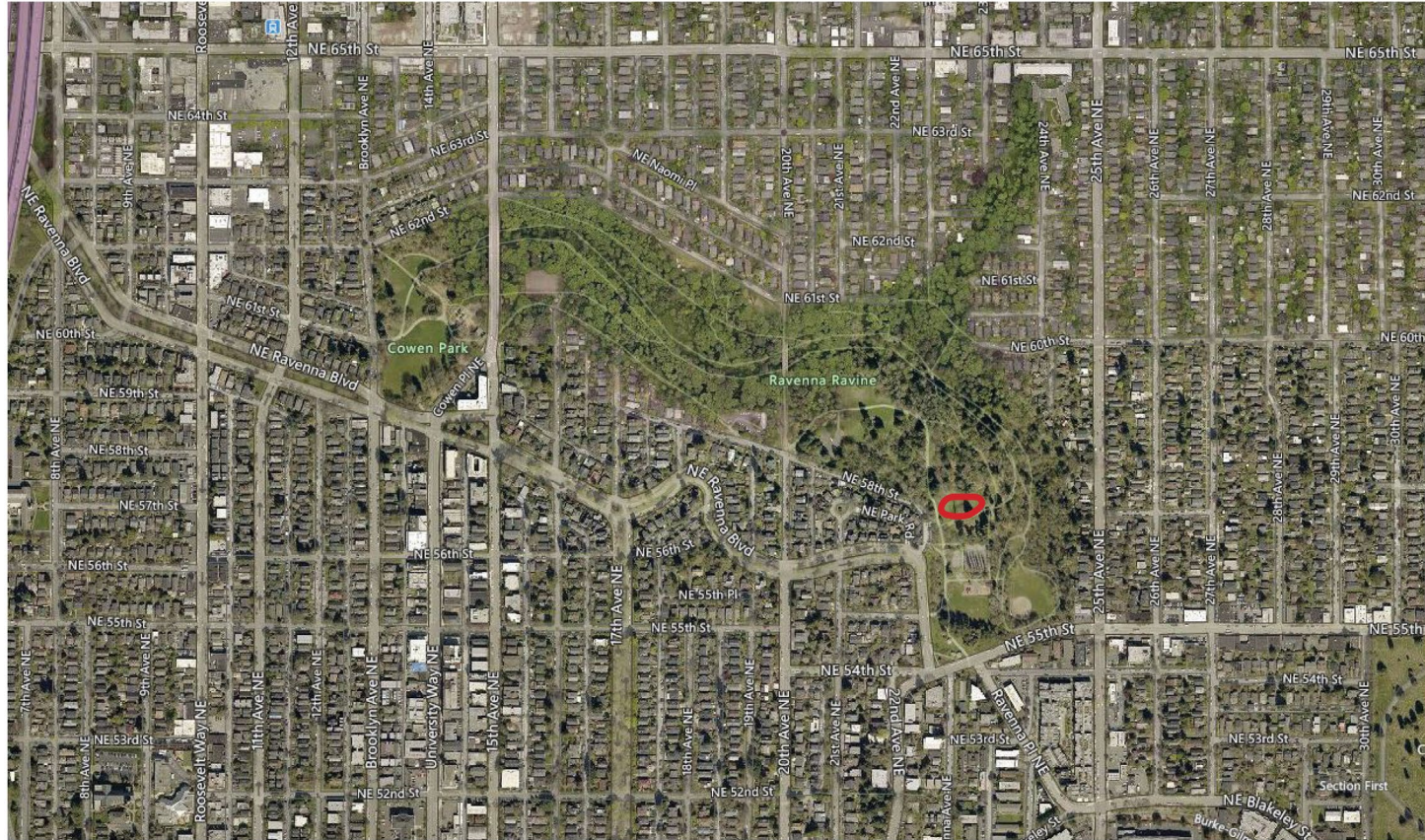
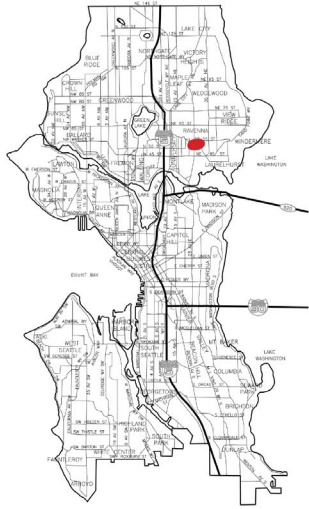


Recommendation #2: Othello Park



- 711 people responded to the site
- **518 (73%)** in support
- 193 (27%) in opposition
- Top supporting comments: Park is within an urban village with increasing density, close to transit/light rail, ~3 miles from nearest current OLA
- Top opposing comments: Parts of the park host regular events, no dedicated off-street parking

Recommendation #3: Ravenna Park

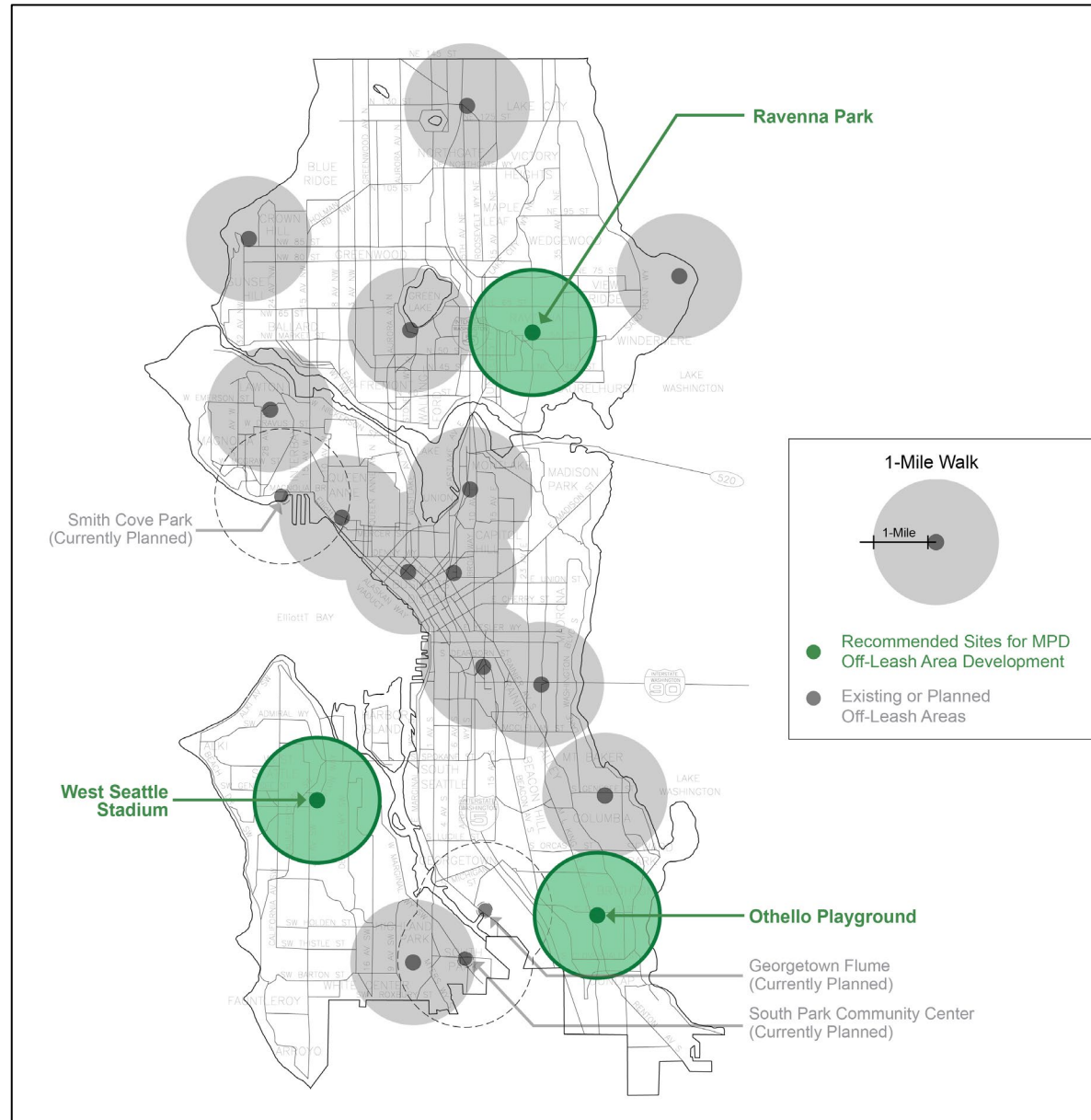


Recommendation #3: Ravenna Park

- 1058 people responded to the site
- **648 (61%)** in support
- 410 (39%) in opposition
- Top supporting comments: area already experiencing unsanctioned off leash activity, park adjacent to 2 urban villages with increasing density, no immediately bordering uses
- Top opposing comments: limited parking, natural character of the park



Map of current sites + Recommendations



Findings on the six remaining sites

Additional sites recommended for future OLAs:

- Brighton Playfield
 - Alternative location in the park needs to be identified for sand volleyball court
- East Queen Anne Playfield
 - Further discussions with community needed on field scheduling capacity



Findings on the six remaining sites

Sites that should be removed from consideration:

- Discovery Park
 - Concerns about environmental impacts as well as community uses at the site
- Powell-Barnett Park
 - Community use of the site
- View Ridge Playfield
 - Potential disruption of existing playfield activities due to close proximity; low priority area due to nearby Magnuson OLA
- Lincoln Park
 - Community prefers passive activation at this site



Next Steps

- Present recommended sites for three funding pockets to the Board of Parks and Recreation Commissioners on 2/22/24
- Public comment and review/approval by BPRC on 3/14/24
- SPR Superintendent approves BPRC recommendations

After approval of recommendations:

- Engage with local area for selected sites in Summer 2024
- Begin preliminary OLA Design/Review for selected sites
 - Begin design for West Seattle & Othello Park site in Summer/Fall 2024
 - Funding for full design and construction available in 2025 and 2026
 - Develop design of Ravenna Park site in 2027/28
 - Current MPD budget only includes funding for design of 3rd OLA



Future OLA Expansion Options

- Explore creative solutions to address gaps
 - Examples include Capitol Hill, Ballard, Northgate
- Focus on dense, walkable neighborhood sites rather than large scale destinations
- Explore partnerships within the city and with other public agencies, beyond SPR sites
- Explore policy changes that allow for expanded access to OLAs
- With expanding OLA system, expanded enforcement of leash laws is needed



Thank you!

